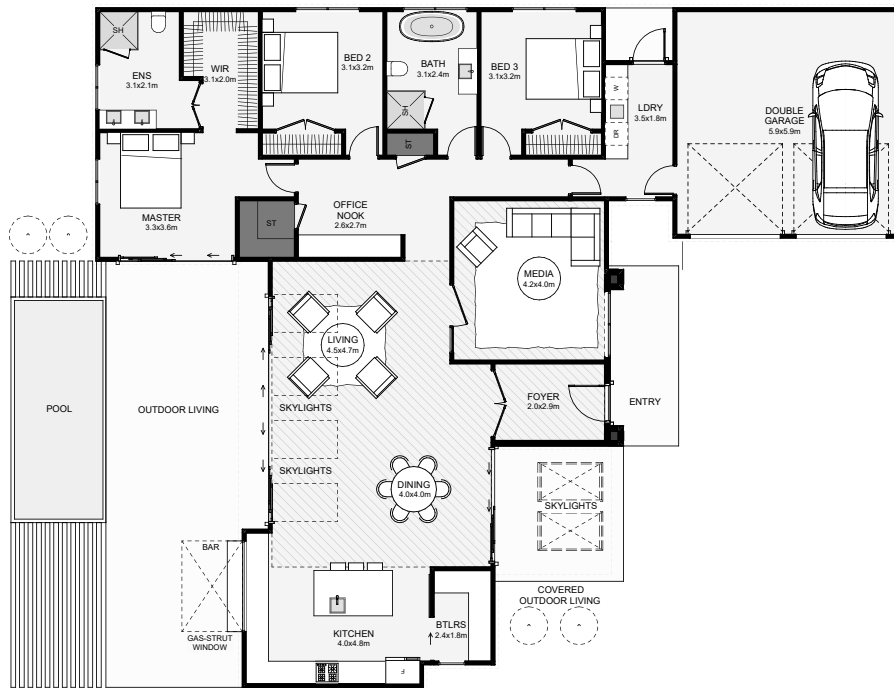





A classy modern home with a timeless accent will draw you into this architectural family home. From entering the foyer, a glimpse through the double glass doors frames a portion of the interior, with the outdoor living and pool as a backdrop that'll make you want to explore further. Features include a large office nook, a butler's pantry, two outdoor living spaces, an outdoor bar, dual living inside and a large laundry. If you want an elegant home that's not too large, this is the one!



Floor Area: 218m²

 2  3+  2  2  21.3m  18.0m

Contact us:

 021 025 82299

E: andy@whitechurchconstruction.co.nz

www.whitechurchconstruction.co.nz



WHITECHURCH
CONSTRUCTION LIMITED